


37 DOVE LANE

PROJECT OUTLINE





OUTLINE

- 
- Project Intent
 - Key Disability Requirements
 - Interior Layout Overview
 - Exterior Layout Overview
 - Our proposal
 - Next steps

PROJECT INTENT

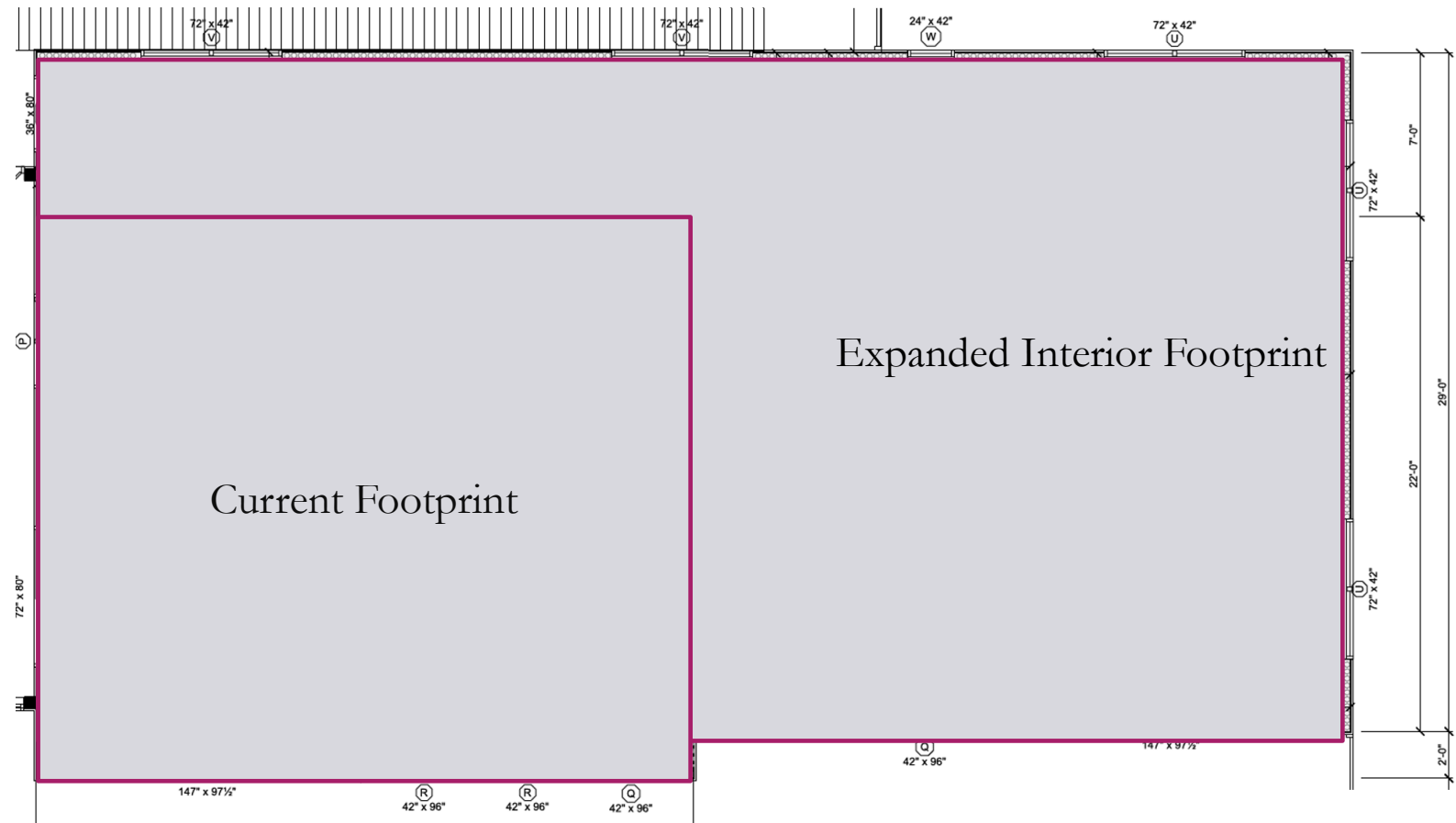
Our intent to expand our current footprint is to make the building far more accessible for our disabled son.

Our goal is to create a comfortable living space that respects the land and nature we love so much.

In order to meet our families' special needs goal, we have created a space that meets the minimum requirements for his quality of life and have kept the space as minimal as possible.

Key Areas of design consideration:

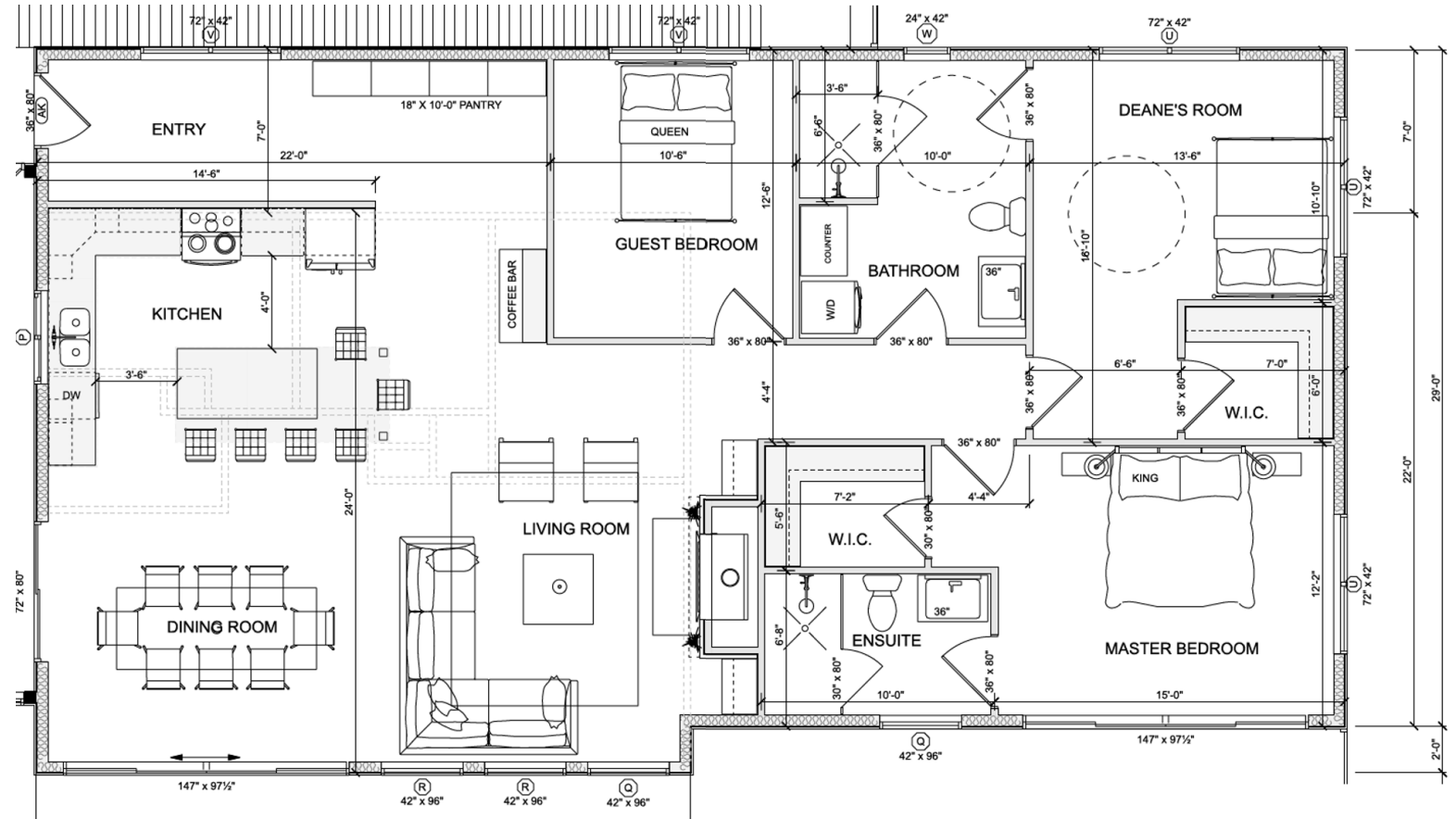
- Complete wheelchair access
- Accessible bathing
- Accessible dining
- Accessible ingress & egress
- Special caregiver accommodations



INTERIOR LAYOUT

We have been accommodating our accessibility needs to the best of our abilities, but many things are just now impossible to manage. The proposed interior layout meets the following special needs:

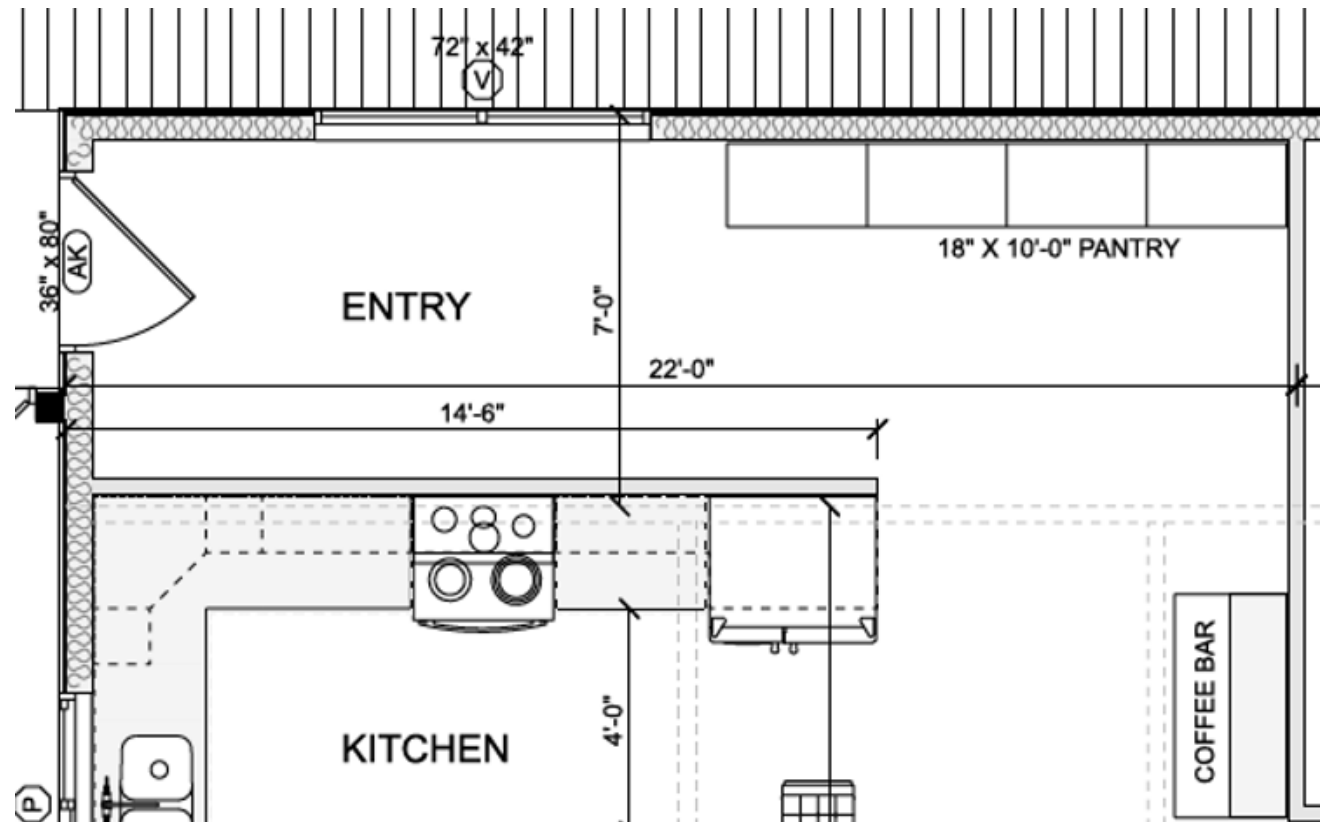
- Interior use of a full-size adult wheelchair and stander
- Roll-in shower and accessible toilet
- A lift to move from wheelchair to bed/change table
- Minimum every other day laundry
- 36" wide doors
- Desired turning circumference in all areas is 5'. Where able, we have reduced the space and will make 4' work
- Struggles with long exposure to sunlight and bugs provide a challenge is the core need for a creating a comfortable outdoor extension



INTERIOR MAIN ENTRANCE

Special Needs Being Met:

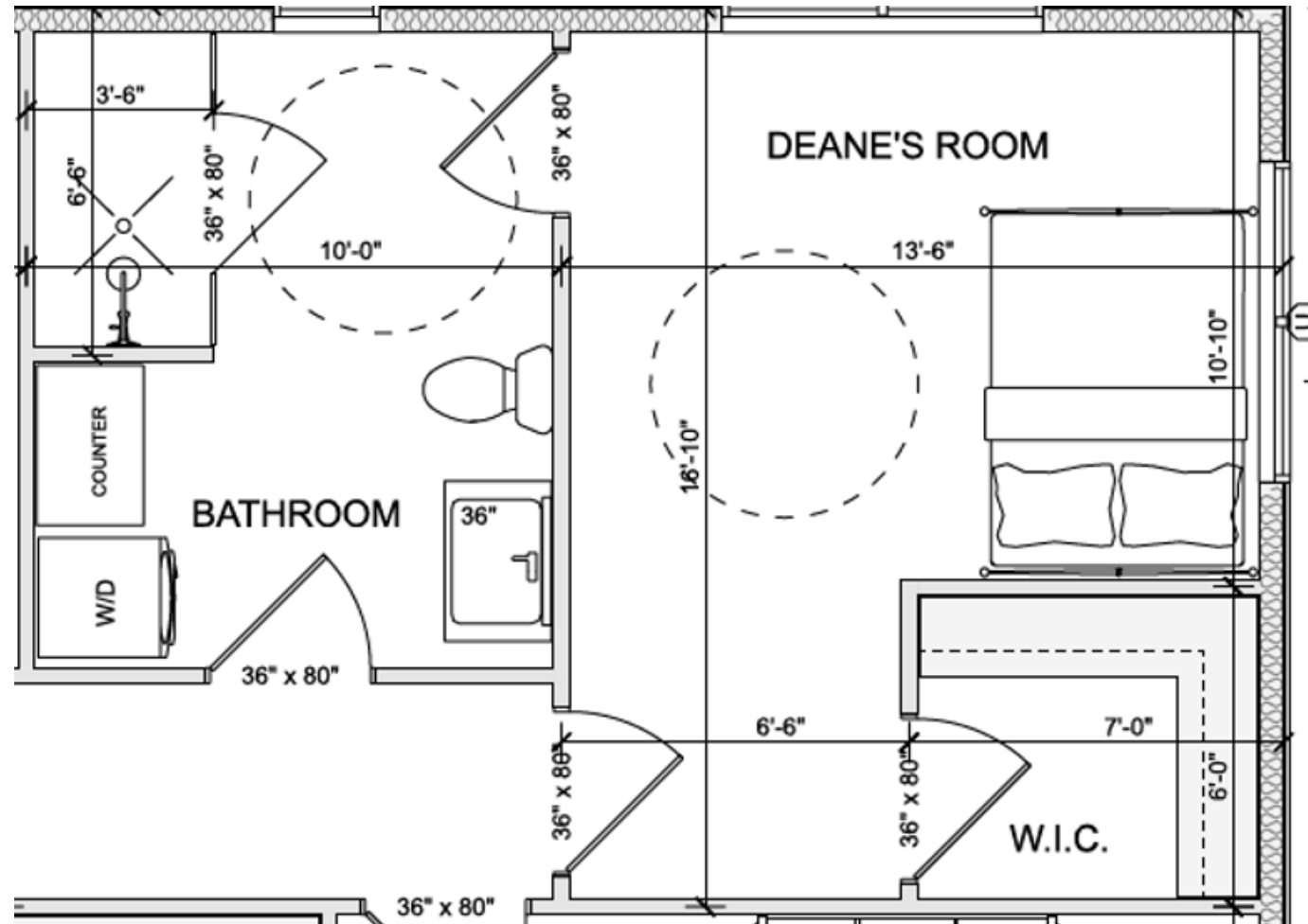
- Special wheelchair entrance from new wheelchair ramp
- Easy access to kitchen
- Wet cloth removal/changing
- Wheelchair cleaning/maintenance
- Storage for outdoor wheelchair equipment



INTERIOR LAYOUT – FULLY ACCESSIBLE BEDROOM

Special Needs for disabled bedroom and bathing area:

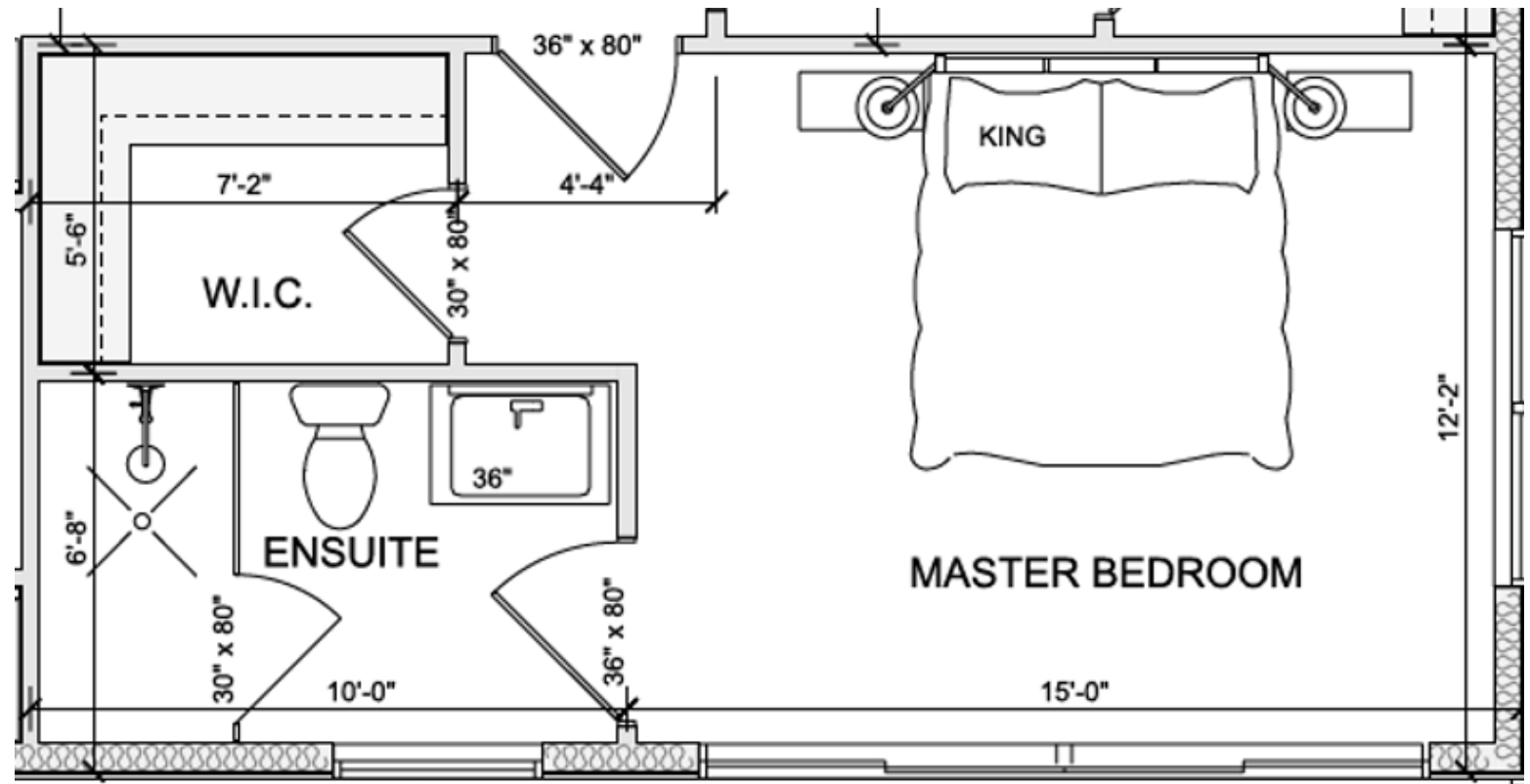
- Wide wheelchair turning radius in bedroom, without oversizing the space
- Wide turning radius and roll-in shower
- Wheelchair accessible sink
- Wheelchair accessible toilet
- Minimal laundry space to accommodate need without being grand
- Closet accommodates:
 - Wheelchair supplies
 - Medical supplies
 - Incontinence supplies products
 - Clothing
 - Various mobility aids



INTERIOR LAYOUT – MASTER BEDROOM

Special Needs being met:

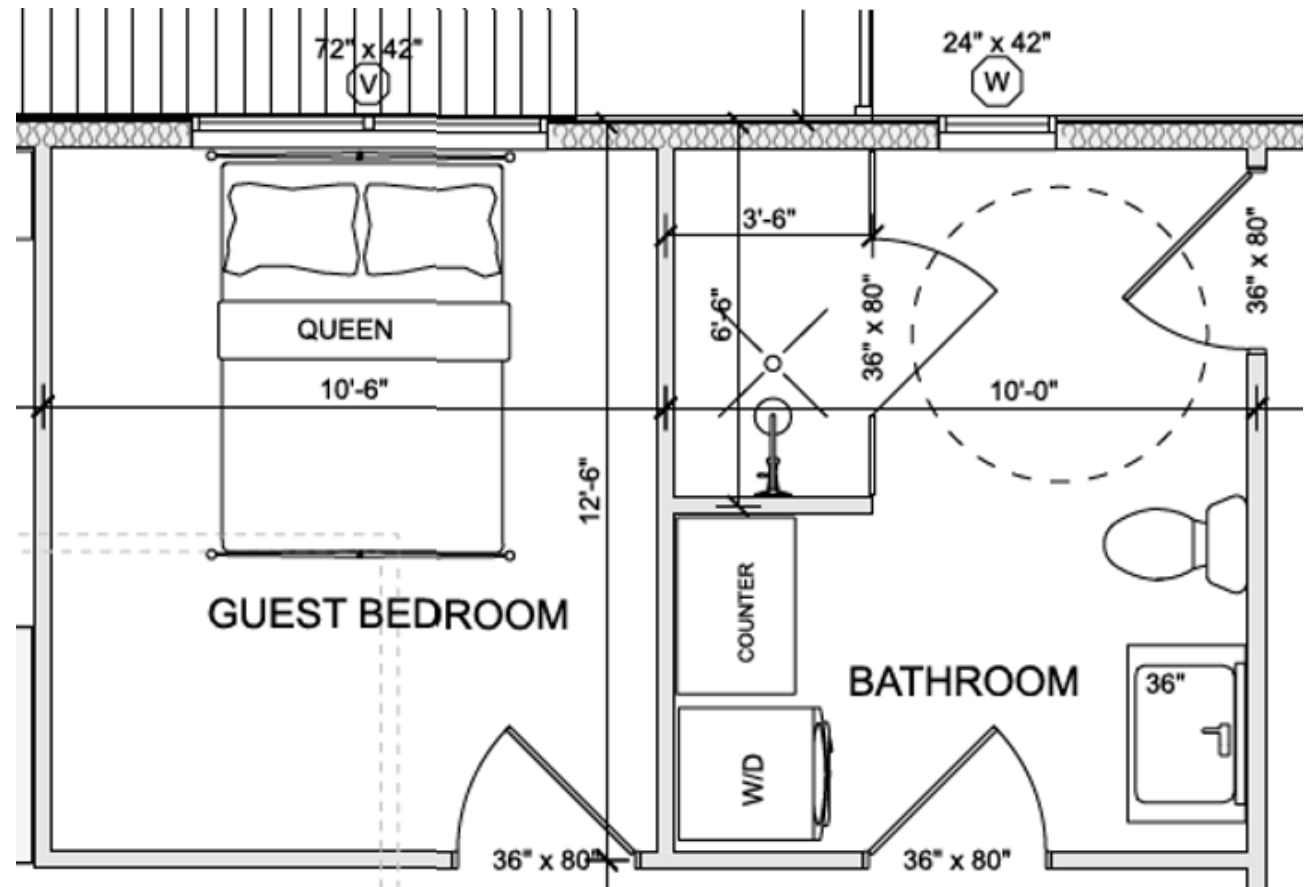
- A self-contained space to allow for privacy for when caregivers are in attendance
- Access for disabled person to gain entrance



INTERIOR LAYOUT – GUEST BEDROOM

Special Needs Being Met:

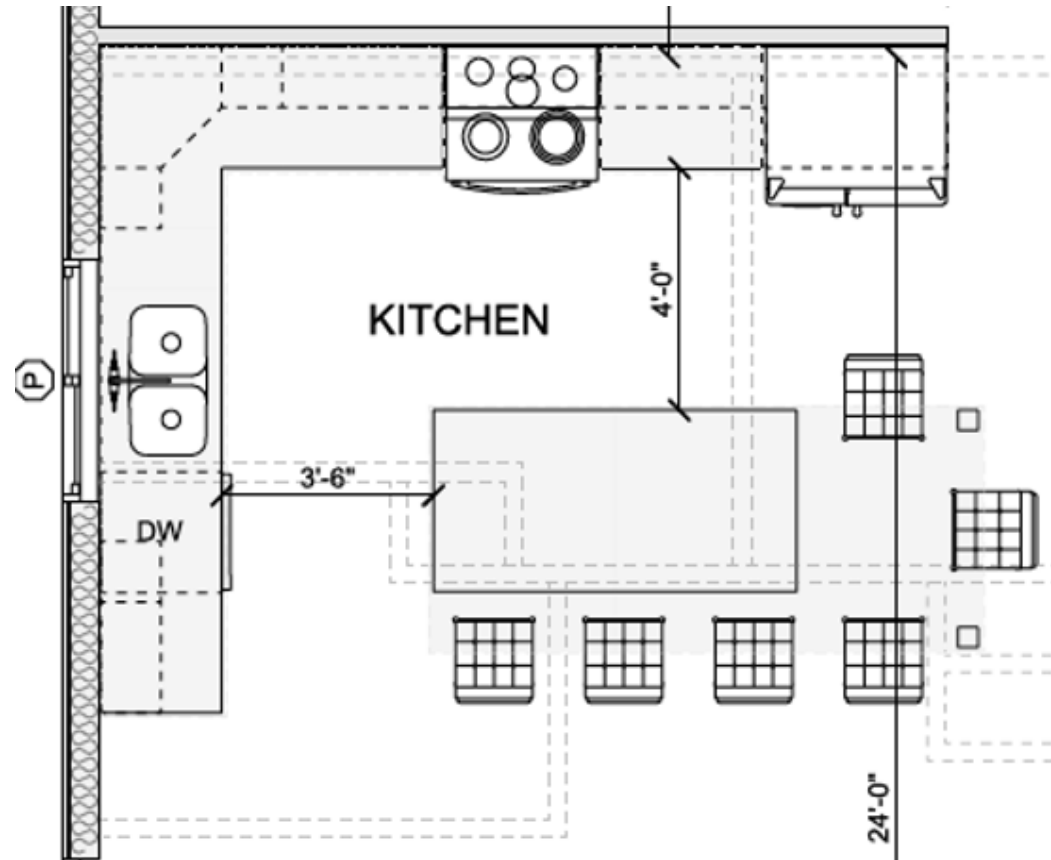
- A guest room for caregiver or other family members often in attendance to help care for our son
- We have minimized bathroom space by creating two entrances to the accessible bathroom
 - One directly for the wheelchair and one for guest access.



INTERIOR LAYOUT

Special Needs Being Met:

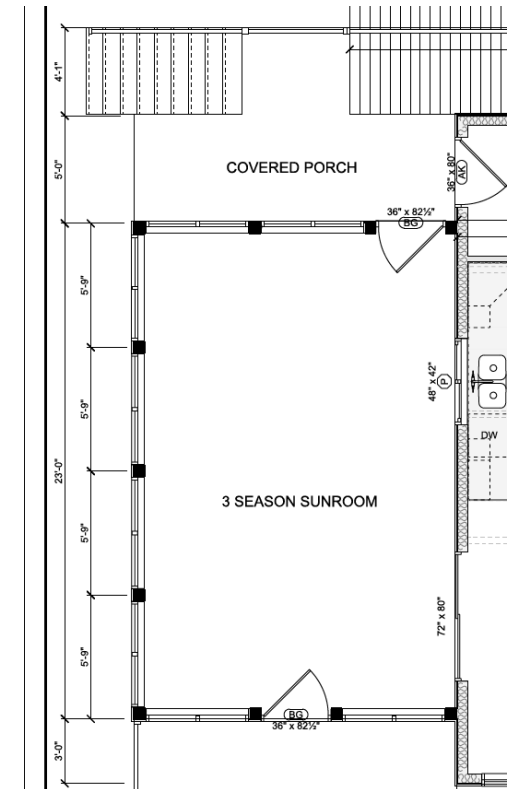
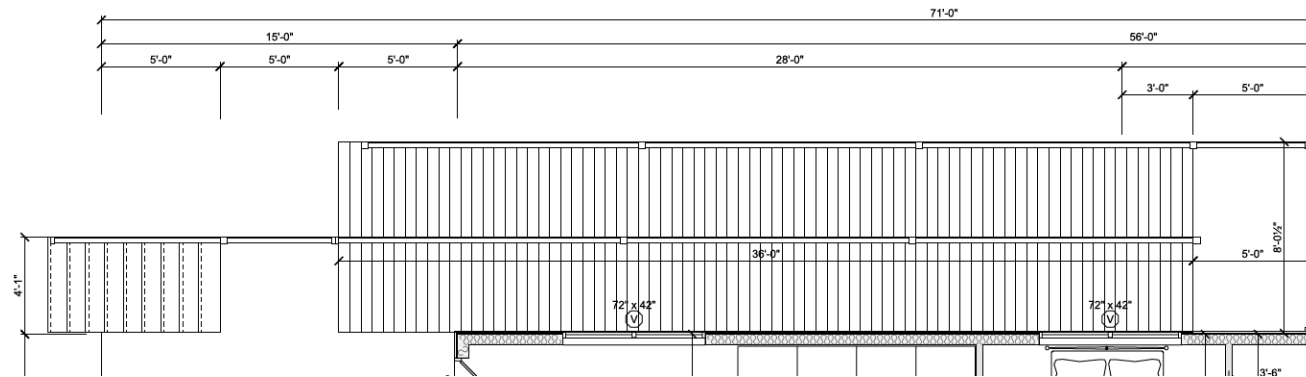
- Modest wheelchair pass through
- Plugs and charging area for enteral feeding pump equipment
- Charging and cleaning area for throat and mouth suction equipment



EXTERIOR LAYOUT

Special Needs Being Met:

- Ingress & Egress from building to code
- Garbage & recycling out of the way of wheelchair or other mobility devices
- Ramp built to code



EXTERIOR LAYOUT

Special Needs Being Met:

- Ramp to code
- Minimizing build to meet the land:
- Proposed 10'x10' mechanical room
- Any new foundation work to be completed on piers
- New roof slope drains away from lake





THANK YOU
FOR YOUR
TIME



Email
mdaprato@rogers.com



Phone
416 520 5944