

Crowe Valley Conservation Authority



Online Pre-Screening Mapping Application

The mapping application will be designed for users to pre-screen whether a property, or a portion of a property, is regulated by CVCA. The intended users of the application would include property owners or potential purchasers of property within the watershed.

Key aspects of the application:

- **Will include legal disclaimer:**
 - Upon application start-up the user will be required to indicate that they agree to the stated limitations before proceeding.
- **Will include an “About/Help” pop-up:**
 - Offers guidance to the user about how to use the application and what tools are available.
- **Will include various tools to help the user such as:**
 - Measurement tool;
 - Legend to describe the various layers;
 - “My Location” button to allow the map to focus in on where the user is currently located;
 - Search bar that can find parcels by 911 Address or Assessment Roll #;
 - “Basemap Gallery” to switch between Topographic maps and Aerial Imagery.

The application will be designed to be as accessible as possible with an easy to use interface and help information available as required. It will be designed to be aesthetically pleasing by using established cartographic standards which are completely customizable. It will also be designed to conform as closely as possible with AODA requirements for accessibility.

Using the ESRI ArcGIS Online platform, the map can be easily updated to include changes to the map data such as new setbacks, newly identified wetlands and others. CVCA staff can be trained to carry out these updates. The data that is accessible by the public can also be restricted. For instance, the map could be restricted to showing only the CVCA Regulated Areas or it could include more detailed layers such as wetland setbacks, water course setbacks, Environmental Protection Zones and others that contribute to developing the overall Regulated Area.

Online Pre-Screening Mapping Application



Demonstration Examples



Figure 1. Legal disclaimer at application start-up.

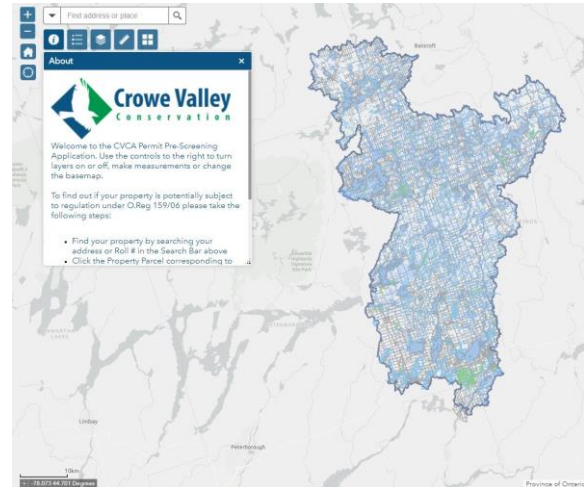


Figure 2. Application interface showing available tools and "About/Help" pop-up to the left.

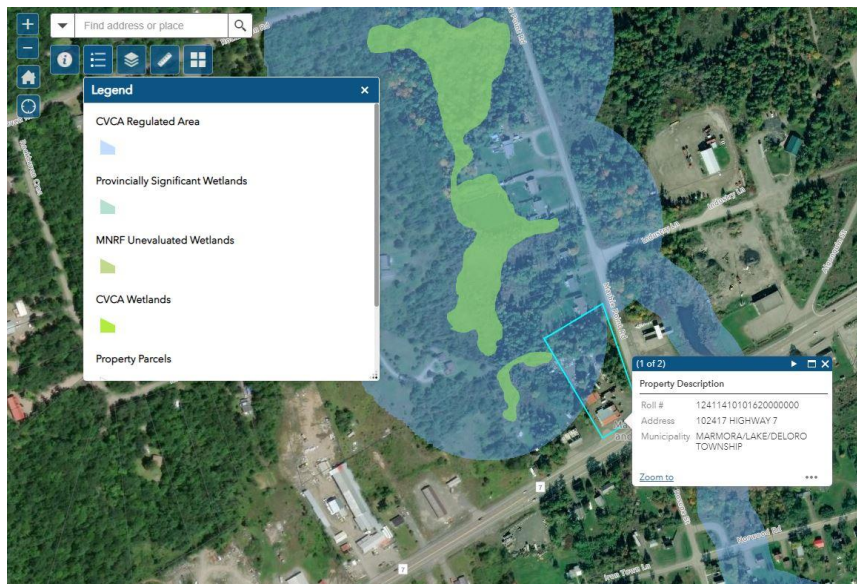


Figure 3. Zoomed-in view of a property showing parcels and maps layers set against aerial imagery. The legend is visible describing each of the layers and a pop-up shows the address and ARN of the highlighted property.